

# MATERIAL HANDLING SEATS





## ABOUT US

Pilot was established in 1963 doing body work for busses. First seat production started in 1967 with driver seats for Mercedes Benz (Otomarsan - Turkey). Development of the seating industry saw Pilot starting to manufacture truck and construction equipment seats in 1977, followed by tractor and forklift seats in 1989, passenger seats in 1993, marine seats in 2010 and railway seats in 2016.

Pilot manufactures in a modern, purpose built 12000 m<sup>2</sup> factory and also has a separate R&D, tooling and testing plant. Both plants are located at the Industrial zone in Bursa, Turkey and have ISO9001, TS16949 and ISO14001 certification. Seats are designed and developed by our R & D Department, tooling is created and manufactured in our Tooling Department, using various design programmes.

Our R & D plant has CNC machines, wire EDM machines, various durability test machines, pull test machines accredited by TUV, as well as several other test equipment for various functions of the seats. This comprehensive and wholly integrated manufacturing, tooling and testing capability allows Pilot to bring new projects to manufacturing very quickly and/or easily make changes on our standard ranges that may be requested by our customers as well as supplying high quality production consistently and in a timely fashion to our customers.

All our seats are extensively and continuously tested for performance and durability by our Quality Department and are certified according to applicable ISO and EU standards. Today, Pilot is a well-known brand in seating industry, exhibiting in all major international exhibitions. We supply OEM and aftermarket customers of various sectors in more than 50 different countries worldwide.

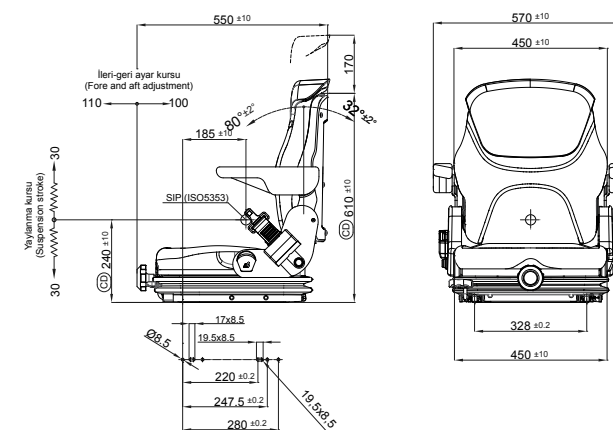


## Products

- Construction Seats
- Forklift Seats
- Agricultural Seats
- Bus & Truck Seats
- Passenger Seats
- Marine Seats
- Railway Seats

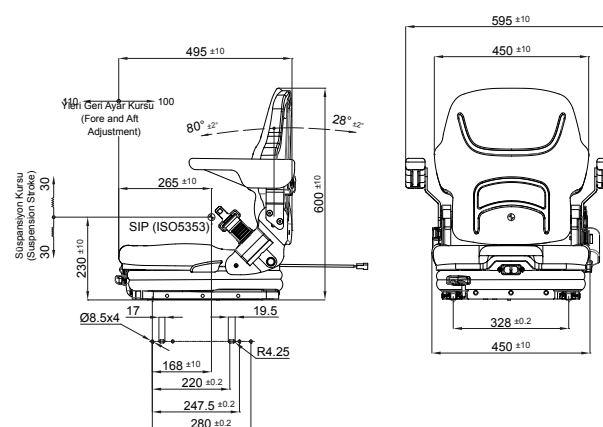
Mechanical suspension	●
Weight adjustment	Manual up to 150 kgs.
Suspension stroke	60 mm
Optional suspension strokes	80 mm, 100 mm
Turn Table	▲
Slide travel	210 mm
Lumbar adjustment	▲
Hip restraints	▲
Fold-up or adjustable armrests	▲
Adjustable Headrest	▲
Adjustable and foldable backrest	●
Vinyl trim (Vacuum type)	●
Cloth trim (Vacuum type)	▲
Seat belt	▲
Document box or pouch	▲
Heater	▲
Operator presence switch	▲
Standard connection width	328 mm
Optional connection width	320 mm
Testing	EN13490 IT1,IT2 ISO7096 EM5,EM6,EM7

● Standard ▲ Optional N/A Not available



Air suspension with 12V or 24V built-in compressor	●
Mechanical suspension	▲
Weight adjustment	Automatic up to 150 kgs.
Suspension stroke	60 mm
Optional suspension stroke	80 mm
Turn Table	▲
Slide travel	210 mm
Lumbar adjustment	▲
Hip restraints	▲
Fold-up or adjustable armrests	▲
Headrest	▲
Adjustable and foldable backrest	●
Vinyl trim (Vacuum type)	●
Cloth trim (Vacuum type)	▲
Seat belt	▲
Document box or pouch	▲
Heater	▲
Operator presence switch	▲
Standard connection width	328 mm
Optional connection width	320 mm

● Standard ▲ Optional N/A Not available



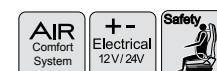
## Acthrone Series

26 / MN60



## Tecthrone Series Medium Air

22 / EAN60



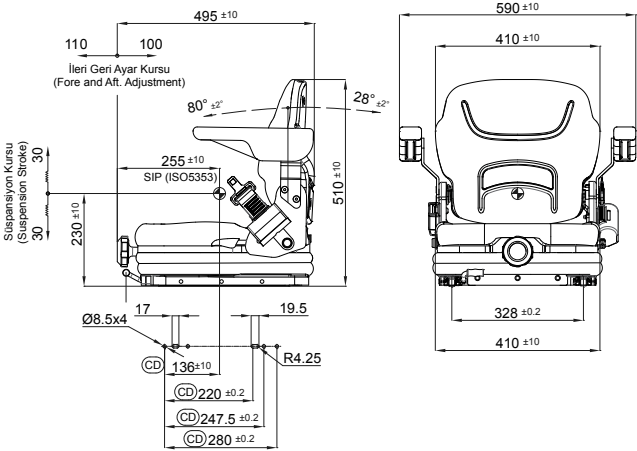
\* The codes are just for sales purposes, they do not represent the exact properties of the seats above.





Air suspension with 12V or 24V built-in compressor	▲
Mechanical suspension	●
Weight adjustment	Manual up to 150 kgs.
Suspension stroke	60 mm
Optional suspension stroke	80 mm
Turn Table	▲
Slide travel	210 mm
Lumbar adjustment	▲
Hip restraints	▲
Fold-up or adjustable armrests	▲
Headrest	▲
Adjustable and foldable backrest	●
Vinyl trim (Vacuum type)	●
Cloth trim (Vacuum type)	▲
Seat belt	▲
Document box or pouch	▲
Heater	▲
Operator presence switch	▲
Standard connection width	328 mm
Optional connection width	320 mm
Testing	EN13490 IT1

● Standard ▲ Optional N/A Not available



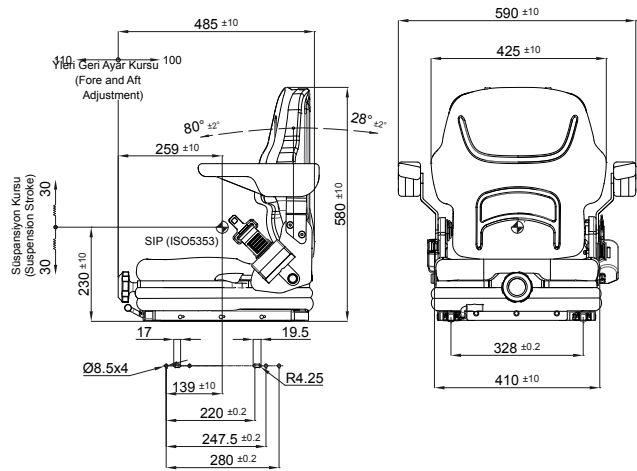
## Tecthron Series Mini

20/MN60



Air suspension with 12V or 24V built-in compressor	▲
Mechanical suspension	●
Weight adjustment	Manual up to 150 kgs.
Suspension stroke	60 mm
Optional suspension stroke	80 mm
Turn Table	▲
Slide travel	210 mm
Lumbar adjustment	▲
Hip restraints	▲
Fold-up or adjustable armrests	▲
Headrest	▲
Adjustable and foldable backrest	●
Vinyl trim (Vacuum type)	●
Cloth trim (Vacuum type)	▲
Seat belt	▲
Document box or pouch	▲
Heater	▲
Operator presence switch	▲
Standard connection width	328 mm
Optional connection width	320 mm
Testing	EN13490 IT1

● Standard ▲ Optional N/A Not available



## Tecthron Series Small

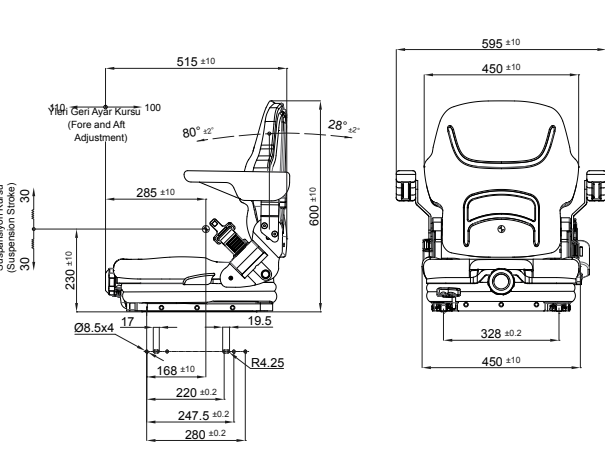
21/MN60



\* The codes are just for sales purposes, they do not represent the exact properties of the seats above.

Air suspension with 12V or 24V built-in compressor	▲
Mechanical suspension	●
Weight adjustment	Manual up to 150 kgs.
Suspension stroke	60 mm
Optional suspension stroke	80 mm
Turn Table	▲
Slide travel	210 mm
Lumbar adjustment	▲
Hip restraints	▲
Fold-up or adjustable armrests	▲
Headrest	▲
Adjustable and foldable backrest	●
Vinyl trim (Vacuum type)	●
Cloth trim (Vacuum type)	▲
Seat belt	▲
Document box or pouch	▲
Heater	▲
Operator presence switch	▲
Standard connection width	328 mm
Optional connection width	320 mm
Testing	EN13490 IT1,IT2

● Standard ▲ Optional N/A Not available



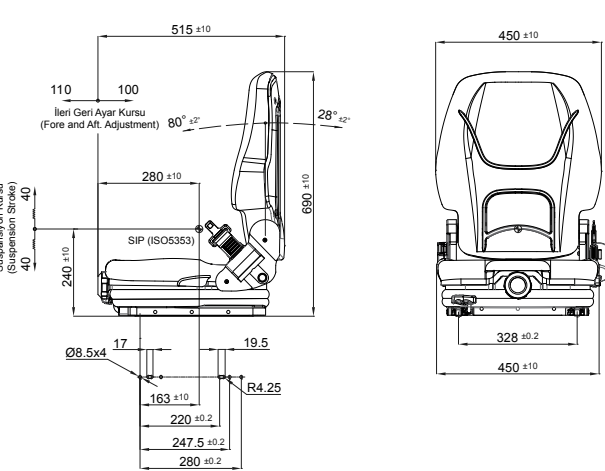
## Tecthron Series Medium

22/MN60



Air suspension with 12V or 24V built-in compressor	▲
Mechanical suspension	●
Weight adjustment	Manual up to 150 kgs.
Suspension stroke	80 mm
Optional suspension stroke	60 mm
Turn Table	▲
Slide travel	210 mm
Lumbar adjustment	▲
Hip restraints	▲
Fold-up or adjustable armrests	▲
Headrest	▲
Adjustable and foldable backrest	●
Vinyl trim (Vacuum type)	●
Cloth trim (Vacuum type)	▲
Seat belt	▲
Document box or pouch	▲
Heater	▲
Operator presence switch	▲
Standard connection width	328 mm
Optional connection width	320 mm
Testing	EN13490 IT1

● Standard ▲ Optional N/A Not available



## Tecthron Series Large

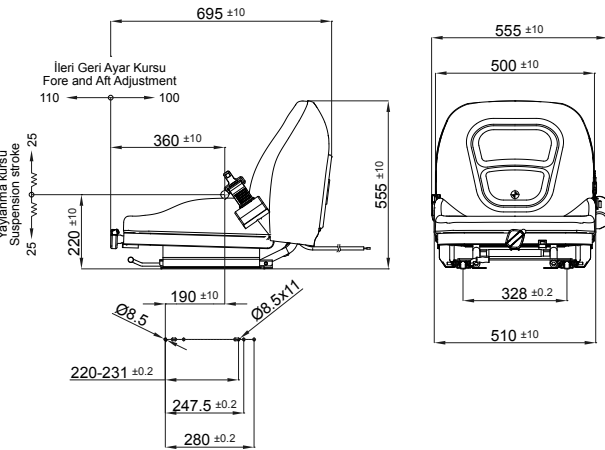
23/MN80



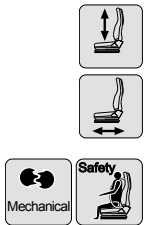
\* The codes are just for sales purposes, they do not represent the exact properties of the seats above.

Mechanical suspension	●
Weight adjustment	Manual up to 150 kgs.
Suspension stroke	50 mm
Turn Table	▲
Slide travel	210 mm
Lumbar adjustment	N/A
Hip restraints	▲
Adjustable armrests	▲
Headrest	N/A
Backrest adjustment	N/A
Vinyl trim (Vacuum type)	●
Cloth trim (Vacuum type)	▲
Seat belt	▲
Document box	●
Heater	▲
Operator presence switch	▲
Standard connection width	328 mm
Optional connection width	320 mm

● Standard ▲ Optional N/A Not available

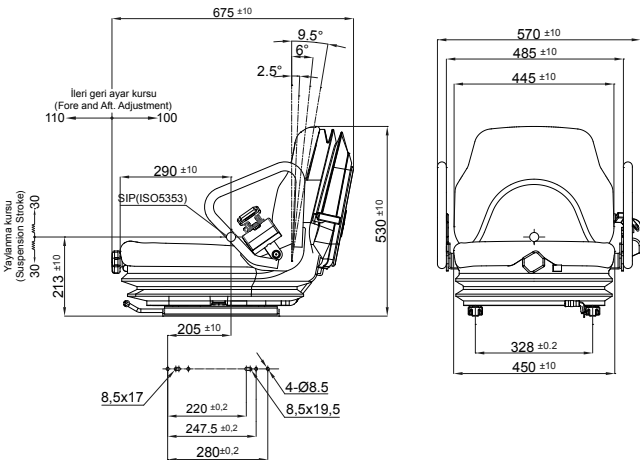


F150 / MN50



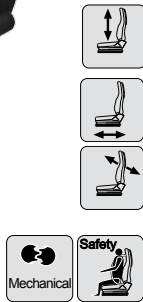
Mechanical suspension	●
Weight adjustment	Manual up to 130 kgs.
Suspension stroke	60 mm
Turn Table	▲
Slide travel	210 mm
Lumbar adjustment	N/A
Hip restraints	▲
Fold-up or adjustable armrests	▲
Headrest	N/A
Backrest adjustment	●
Vinyl trim (Vacuum type)	●
Cloth trim (Vacuum type)	▲
Seat belt	▲
Document box	●
Heater	▲
Operator presence switch	▲
Standard connection width	328 mm
Optional connection width	320 mm

● Standard ▲ Optional N/A Not available



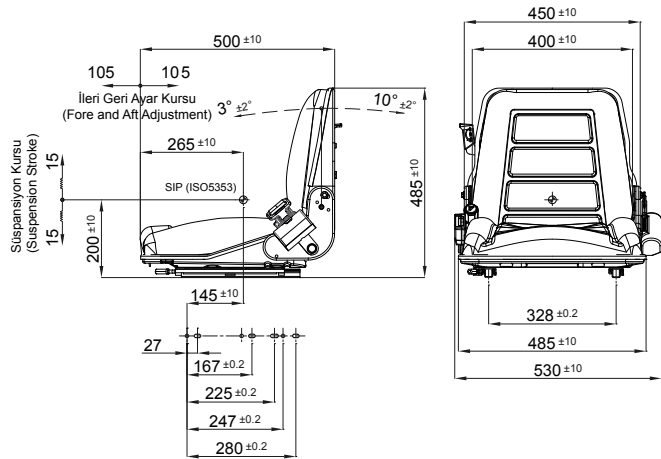
Technomact Series

F140T / MN60

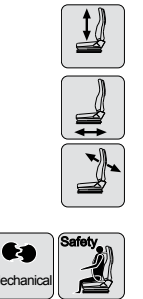


Mechanical suspension	●
Weight adjustment	Manual up to 130 kgs.
Suspension stroke	30 mm
Turn Table	▲
Slide travel	210 mm
Hip restraints	▲
Fold-up or adjustable armrests	▲
Headrest	N/A
Backrest adjustment	●
Vinyl trim (Vacuum type)	●
Cloth trim (Vacuum type)	▲
Seat belt	▲
Document box or pouch	▲
Heater	▲
Operator presence switch	▲
Standard connection width	328 mm
Optional connection widths	180 mm, 207 mm, 260 mm, 268 mm
HD Slides (ISO6683)	▲
Testing	ISO3776

● Standard ▲ Optional N/A Not available

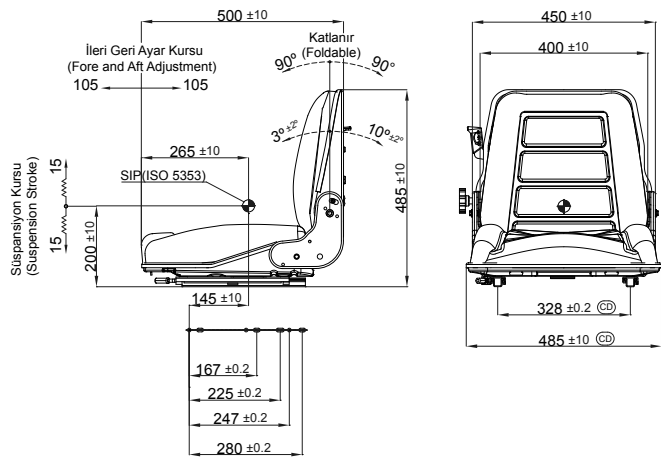


F92

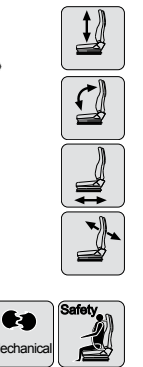


Mechanical suspension	●
Weight adjustment	Manual up to 130 kgs.
Suspension stroke	30 mm
Turn Table	▲
Slide travel	210 mm
Hip restraints	▲
Fold-up or adjustable armrests	▲
Headrest	N/A
Adjustable and foldable backrest	▲
Vinyl trim (Vacuum type)	●
Cloth trim (Vacuum type)	▲
Seat belt	▲
Document box or pouch	▲
Heater	▲
Operator presence switch	▲
Standard connection width	328 mm
Optional connection widths	180 mm, 207 mm, 260 mm, 268 mm
HD Slides (ISO6683)	▲
Testing	ISO3776

● Standard ▲ Optional N/A Not available



FK92



\* The codes are just for sales purposes, they do not represent the exact properties of the seats above.

\* The codes are just for sales purposes, they do not represent the exact properties of the seats above.



PILOT TAŞIT KOLTUKLARI SAN. VE TİC. A.Ş.  
Organize Sanayi Bölgesi Kırmızı Cad. No:7 16140 Nilüfer / BURSA  
Tel : +90.224 411 02 80 pbx Fax: +90.224 411 02 82  
email: pilot@pilot.com.tr web: www.pilot.com.tr

