

# CONSTRUCTION EQUIPMENT SEATS





## ABOUT US

Pilot was established in 1963 doing body work for busses. First seat production started in 1967 with driver seats for Mercedes Benz (Otomarsan - Turkey). Development of the seating industry saw Pilot starting to manufacture truck and construction equipment seats in 1977, followed by tractor and forklift seats in 1989, passenger seats in 1993, marine seats in 2010 and railway seats in 2016.

Pilot manufactures in a modern, purpose built 12000 m<sup>2</sup> factory and also has a separate R&D, tooling and testing plant. Both plants are located at the Industrial zone in Bursa, Turkey and have ISO9001, TS16949 and ISO14001 certification. Seats are designed and developed by our R & D Department, tooling is created and manufactured in our Tooling Department, using various design programmes.

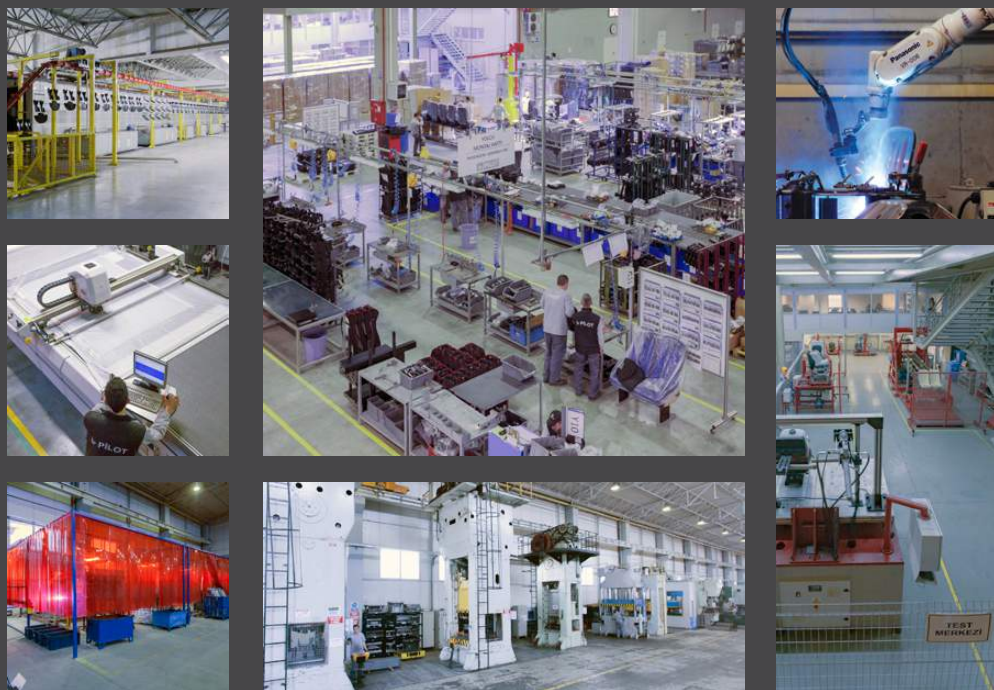
Our R & D plant has CNC machines, wire EDM machines, various durability test machines, pull test machines accredited by TUV, as well as several other test equipment for various functions of the seats. This comprehensive and wholly integrated manufacturing, tooling and testing capability allows Pilot to bring new projects to manufacturing very quickly and/or easily make changes on our standard ranges that may be requested by our customers as well as supplying high quality production consistently and in a timely fashion to our customers.

All our seats are extensively and continuously tested for performance and durability by our Quality Department and are certified according to applicable ISO and EU standards. Today, Pilot is a well-known brand in seating industry, exhibiting in all major international exhibitions. We supply OEM and aftermarket customers of various sectors in more than 50 different countries worldwide.



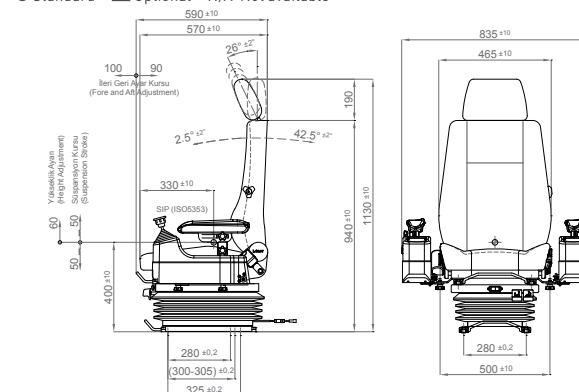
## Products

- Construction Seats
- Forklift Seats
- Agricultural Seats
- Bus & Truck Seats
- Passenger Seats
- Marine Seats
- Railway Seats



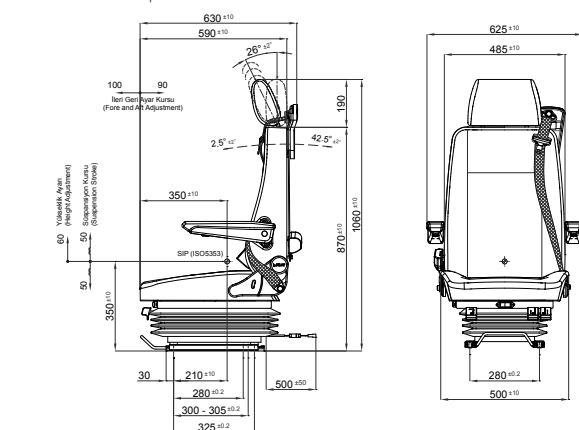
Air suspension	▲
Air suspension with 12V or 24V built-in compressor	●
Mechanical suspension	▲
Weight adjustment	Automatic up to 150kgs.
Suspension stroke	100mm
Optional suspension stroke	80 mm
Turn Table	▲
Seat height and tilt adjustment	60mm
Seat cushion depth adjustment	N/A
Slide travel	190mm
Lumbar adjustment	▲
Adjustable armrests	▲
Joystick holders including adjustable armrests	▲
Adjustable headrest	▲
Backrest adjustment	●
Vinyl trim (cut & sew)	●
Cloth trim (cut & sew)	▲
Genuine leather trim	▲
2 Point seat belt	▲
3 Point seat belt	▲
Document box-pouch	▲
Front Controls	●
LH Controls	N/A
RH Controls	N/A
Heater	▲
Operator presence switch	▲
Slides between seat top and suspension	280mm
Standard connection widths	216 - 230 - 260 - 320 - 328mm
Optional connection widths	ECE R25
Testing	●

● Standard ▲ Optional N/A Not available

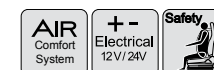


Air suspension	▲
Air suspension with 12V or 24V built-in compressor	●
Mechanical suspension	▲
Weight adjustment	Automatic up to 150 kgs.
Suspension stroke	100mm
Optional suspension stroke	80 mm
Turn Table	▲
Seat height and tilt adjustment	60mm
Seat cushion depth adjustment	N/A
Slide travel	190mm
Lumbar adjustment	▲
Adjustable armrests	▲
Joystick holders including adjustable armrests	When slides are between seat top and suspension
Adjustable headrest	▲
Backrest adjustment	●
Vinyl trim (cut & sew)	●
Cloth trim (cut & sew)	▲
Genuine leather trim	▲
2 Point seat belt	▲
3 Point seat belt	▲
Document box-pouch	▲
Front Controls	●
LH Controls	N/A
RH Controls	N/A
Heater	▲
Operator presence switch	▲
Slides between seat top and suspension	280mm
Standard connection widths	216 - 230 - 260 - 320 - 328mm
Optional connection widths	ECE R25
Testing	●

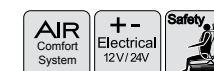
● Standard ▲ Optional N/A Not available



## 1098 Electrical Air Series 1098WK / EA100G2



## 1098 Electrical Air Series 1098 / EA100F4



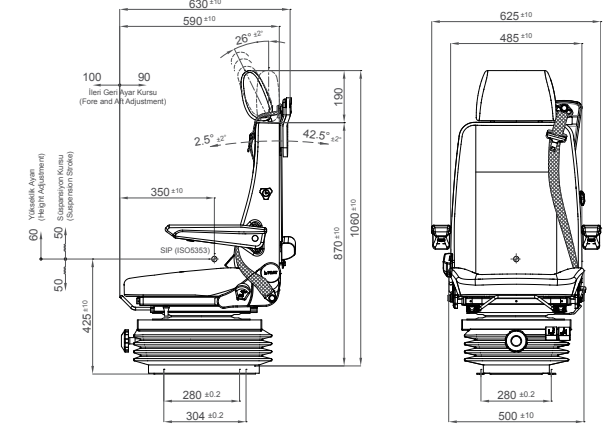
If slides are between seat top and suspension, front control is only available for weight and height adj. Backrest adj handle has to stay on either LH or RH.

\* The codes are just for sales purposes, they do not represent the exact properties of the seats above.



Air suspension	▲
Air suspension with 12V or 24V built-in compressor	●
Mechanical suspension	●
Weight adjustment	Manual up to 150kgs.
Suspension stroke	100mm
Optional suspension stroke	80 mm
Turn Table	▲
Seat height and tilt adjustment	60mm
Seat cushion depth adjustment	N/A
Slide travel	190mm
Lumbar adjustment	▲
Adjustable armrests	▲
Joystick holders including adjustable armrests	▲
Adjustable headrest	▲
Backrest adjustment	●
Vinyl trim (cut & sew)	●
Cloth trim (cut & sew)	●
Genuine leather trim	▲
2 Point seat belt	▲
3 Point seat belt	▲
Document box-pouch	▲
Front Controls	●
LH Controls	▲
RH Controls	▲
Heater	▲
Operator presence switch	▲
Slides between seat top and suspension	▲
Standard connection widths	280mm
Optional connection widths	260mm (Order ---/M100G2) "ISO 7096 EM3-EM5 ISO 6683 ECE R25"
Testing	

● Standard
 ▲ Optional
 N/A Not available

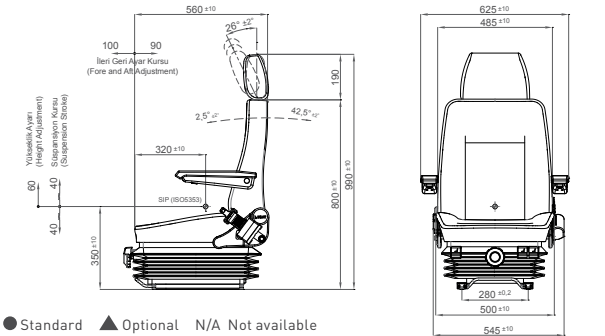


## 1098 Mechanical Series

1098K / CM100G2



Air suspension	▲
Air suspension with 12V or 24V built-in compressor	●
Mechanical suspension	●
Weight adjustment	Manual up to 150kgs.
Suspension stroke	80 mm
Optional suspension stroke	100 mm
Turn Table	▲
Seat height and tilt adjustment	60mm
Seat cushion depth adjustment	N/A
Slide travel	190mm
Lumbar adjustment	▲
Adjustable armrests	▲
Joystick holders including adjustable armrests	When slides are between seat top and suspension
Adjustable headrest	▲
Backrest adjustment	●
Vinyl trim (cut & sew)	●
Cloth trim (cut & sew)	●
Genuine leather trim	▲
2 Point seat belt	▲
3 Point seat belt	▲
Document box-pouch	▲
Front Controls	●
LH Controls	▲
RH Controls	▲
Heater	▲
Operator presence switch	▲
Slides between seat top and suspension	▲
Standard connection widths	280mm
Optional connection widths	216 - 230 - 260 - 320 - 328mm "ISO 7096 EM3-EM5 ISO 6683 ECE R25"
Testing	



## 488 Mechanical Series

488 / M80F4-280

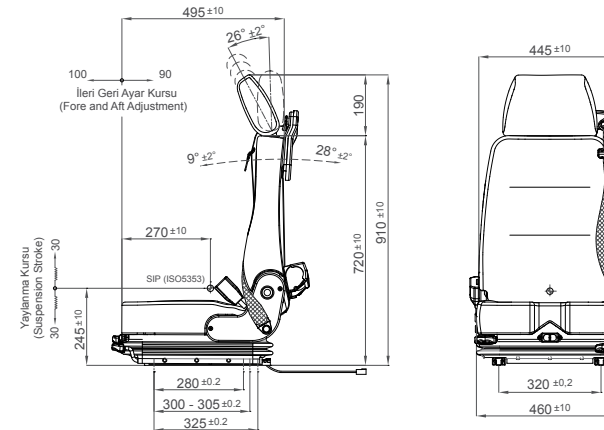


If slides are between seat top and suspension, front control is only available for weight and height adj. Backrest adj handle has to stay on either LH or RH.

\* The codes are just for sales purposes, they do not represent the exact properties of the seats above.

Air suspension with 12V or 24V built-in compressor	●
Mechanical suspension	▲
Weight adjustment	Automatic up to 150kgs.
Suspension stroke	60mm
Turn Table	▲
Slide travel	190mm
Lumbar adjustment	▲
Adjustable armrests	▲
Adjustable headrest	▲
Backrest adjustment	●
Seat cushion tilt adjustment	N/A
Seat cushion depth adjustment	N/A
Vinyl trim (cut & sew)	●
Cloth trim (cut & sew)	●
Genuine leather trim	▲
2 Point seat belt	▲
3 Point seat belt	Backrest forward adj reduces to 9°
Document box-pouch	●
Front Controls	●
LH Controls	N/A
RH Controls	N/A
Heater	▲
Operator presence switch	▲
Slides between seat top and suspension	N/A
Standard connection widths	320mm
Optional connection widths	180 - 328mm
Testing	ECE R14 Class M2/N2

● Standard
 ▲ Optional
 N/A Not available



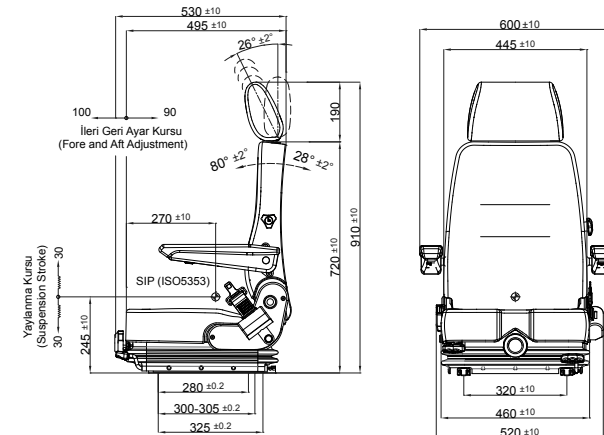
## 408 Electrical Air Series

408 / EAN60



Air suspension with 12V or 24V built-in compressor	▲
Mechanical suspension	●
Weight adjustment	Manual up to 150kgs.
Suspension stroke	60mm
Turn Table	▲
Slide travel	190mm
Lumbar adjustment	▲
Adjustable armrests	▲
Adjustable headrest	▲
Backrest adjustment	●
Seat cushion tilt adjustment	N/A
Seat cushion depth adjustment	N/A
Vinyl trim (cut & sew)	●
Cloth trim (cut & sew)	●
Genuine leather trim	▲
2 Point seat belt	▲
3 Point seat belt	Backrest forward adj reduces to 9°
Document box-pouch	●
Front Controls	●
LH Controls	N/A
RH Controls	N/A
Heater	▲
Operator presence switch	▲
Slides between seat top and suspension	N/A
Standard connection widths	320 mm
Optional connection widths	180 - 328mm

● Standard
 ▲ Optional
 N/A Not available



## 408 Mechanical Series

408 / MN60



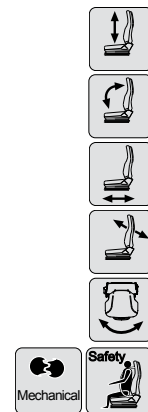
\* The codes are just for sales purposes, they do not represent the exact properties of the seats above.

● Standard
 ▲ Optional
 N/A Not available





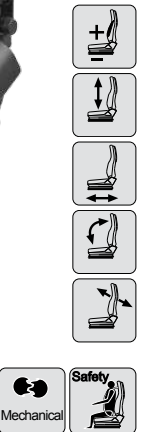
● Standard ▲ Optional N/A Not available



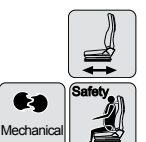
● Standard ▲ Optional N/A Not available



● Standard ▲ Optional N/A Not available



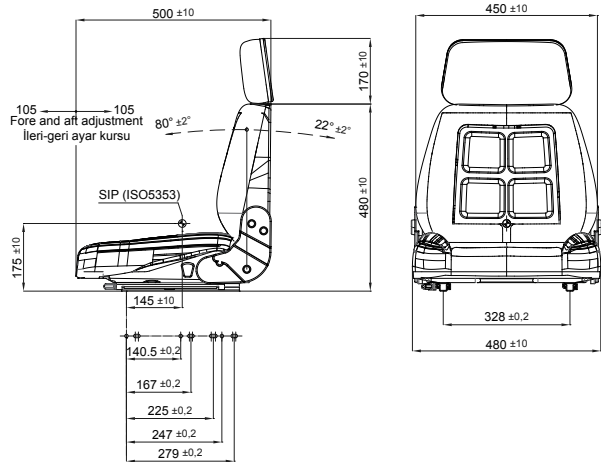
● Standard ▲ Optional N/A Not available





Turn Table	▲
Slide travel	210 mm
Lumbar adjustment	▲
Adjustable or fold-up armrests	▲
Headrest	▲
Foldable & adjustable backrest	●
Vinyl trim (Vacuum type)	●
Cloth trim (Vacuum type)	●
2 Point seat belt	▲
Document box-pouch	▲
Heater	▲
Operator presence switch	▲
Standard connection widths	328 mm
Optional connection widths	180 - 207 - 260 - 268 mm

● Standard ▲ Optional N/A Not available



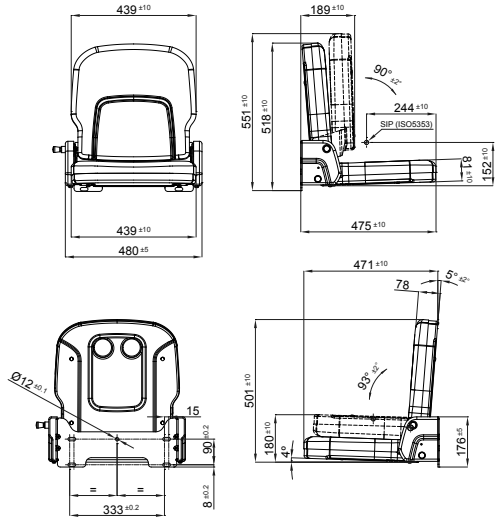
81



Fold up seat cushion	●
Fold down backrest	●
Vinyl trim (Vacuum type)	●
Cloth trim (Vacuum type)	▲
2 Point seat belt	▲

● Standard ▲ Optional N/A Not available

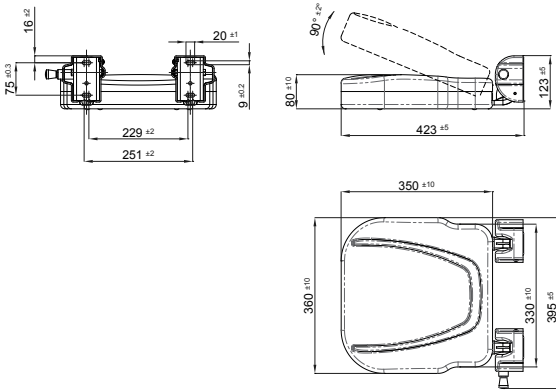
PFS2001



Fold up seat cushion	●
Fold down backrest	N/A
Vinyl trim (Vacuum type)	●
Cloth trim (Vacuum type)	▲
2 Point seat belt	N/A

● Standard ▲ Optional N/A Not available

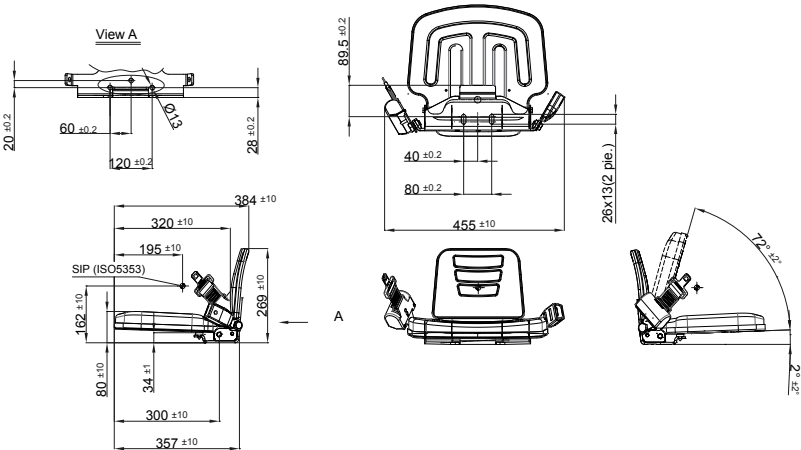
PYH2113



Fold up seat cushion	●
Fold down backrest	N/A
Vinyl trim (Vacuum type)	●
Cloth trim (Vacuum type)	▲
2 Point seat belt	▲

● Standard ▲ Optional N/A Not available

TH12



\* The codes are just for sales purposes, they do not represent the exact properties of the seats above.

\* The codes are just for sales purposes, they do not represent the exact properties of the seats above.



PILOT TAŞIT KOLTUKLARI SAN. VE TİC. A.Ş.  
Organize Sanayi Bölgesi Kırmızı Cad. No:7 16140 Nilüfer / BURSA  
Tel : +90.224 411 02 80 pbx Fax: +90.224 411 02 82  
email: pilot@pilot.com.tr web: www.pilot.com.tr

