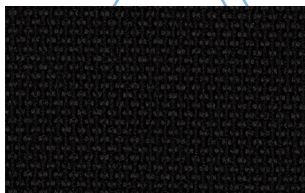


Office Chair Fabric Trim Options

KAB//Seating

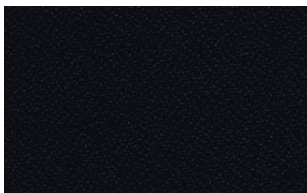


KAB Storm

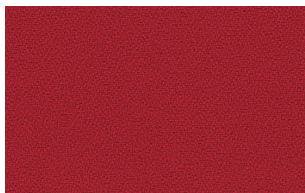


WhiteLine Fighter

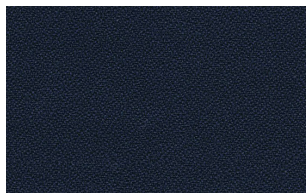
Xtreme



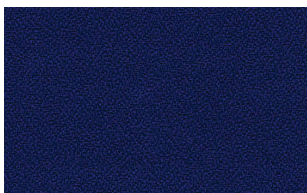
Havana YS009



Panama YS079



Costa YS026

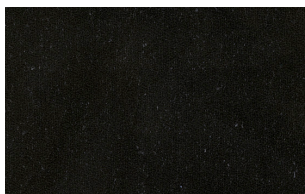


Ocean YS100

24/7 Flax



Quarter FYR19



While FYR21



Equinox FYR03



@KABSeating



www.youtube.com/KABSeatingUK

www.kabseating.com

Xtreme & Urban	
Composition	100% Recycled Flame Retardant Polyester
Weight	310gsm ±5% (500gsm ±7% inc. foam) Xtreme 320gsm ±5% (530gsm ±7% inc. foam) Urban
Abrasion Resistance	100,000 cycles (800g/12Kpa) Martindale
Flammability	BS EN 1021 - 1 :2014 (cigarette) BS EN 1021 - 2 :2014 (match) BS 7176 : 2007 Low & Medium Hazard (with foam). BS 5852 : 2006 Section 4 Ignition Source 5 Note: Flammability performance is dependent on foam used
Maintenance	Washable to 60°C. Vacuum regularly. Wipe clean with a damp cloth or shampoo using proprietary upholstery shampoo.

KAB Storm	
Composition	55% Polyamide, 27% Viscose, 18% Wool
Weight	342gsm ±7% (510gsm. ±7% inc. foam)
Width	135cm ± 2% Usable
Abrasion Resistance	200,000 cycles (800g/12Kpal) Martindale
Flammability	BS EN 1021 - 1 (cigarette) BS EN 1021 - 2 (match) BS 7176 : Low Hazard Note: Flammability performance is dependent on foam used
Maintenance	Vacuum regularly and wipe clean with a damp cloth. Generally ex-stock. Custom colours available.

24/7 Flax	
Composition	50% Polyamide, 33% Wool 10% Recycled Flame Retardant Viscose 7% Viscose
Weight	435gsm ±5% (580gsm. ±7% inc. foam)
Abrasion Resistance	In excess of 200,000 Martindale cycles with a 10 year guarantee of wearability (full details available)
Flammability	BS EN 1021 - 1 :2014 Cigarette BS EN 1021 - 2 :2014 Match BS 7176 : 2007 Low & Medium Hazard Note: Flammability performance is dependent on foam used
Maintenance	Vacuum regularly. Professionally clean or wipe clean with a damp cloth.

WhiteLine Fighter	
Composition	100% Polyester
Weight	510gsm ±5% (460g/lin.m. ±5%)
Abrasion Resistance	130,000 cycles Martindale
Flammability	BS EN 1021-1 Cigarette BS EN 1021-2 Match ÖNORM B 3825-B1-3800-Q1 UK BS 7176 : 2007 Low & Medium Hazard BS 5852 Part 1 0,1 Cigarette & match Note: Flammability performance is dependent on foam used
Maintenance	Vacuum regularly, wash or dry clean. Fighter is made of polyester which is a synthetic easy-clean material able to be suited to various office environments.

Colour Matching on all fabrics- Batch to batch variations in shade may occur within commercial tolerances



Xtreme and Urban are EU accredited fabrics made from 100% recycled polyester savings virgin raw materials, reducing waste to landfill and minimising our damage to the environment. Life Cycle Assessment has confirmed significant environmental improvements of recycled polyester compared to virgin polyester.

Made using sustainable manufacturing techniques, including green electricity, comprehensive energy and effluent management, these fabrics leave a lighter environmental footprint.

KAB UK

KAB Seating Ltd -
Northampton
T +44 (0) 1604 790500
E infouk@cvgrp.com
www.kabseating.com

KAB Sweden

KAB Seating AB - Stockholm
T +46 (0) 8 554 427 00
E infosweden@cvgrp.com

KAB Australia

KAB Seating Pty. Ltd -
Brisbane
T +61 (0) 7 3344 0500
E australia.brisbane@cvgrp.com

KAB Belgium

KAB Seating SA - Saintes
T +32 (0) 2 367 13 10
E infobelgium@cvgrp.com

CVG China

CVG Vehicle Components -
Shanghai
T +86 21 5958 5801
E infochina@cvgrp.com

CVG World Headquarters

New Albany, Ohio, USA
T (614) 289-5360
E info@cvgrp.com
www.cvgrp.com

Distributor